

ATLANTIC HAWK

ANCHOR HANDLING TUG SUPPLY VESSEL



Registration

- Built: Halifax Shipyard 2000
- Flag: Canadian
- Official Number: 821332
- IMO Number: 9199115
- Call Sign: VCYY
- Vessel Type: UT 722 Anchor Handling Tug Supply Vessel
- Classification: DNV
- Main Class: * 1A1 Tug Supply Vessel
- Additional Class: FIFI II, EO, ICE-1C, TMON, DYNPOS-AUTR, DK(+)HL(2.5), SF

Principle Dimensions

- Length overall: 75.00 m
- Length BP: 64.40 m
- Breadth, moulded: 18.00 m
- Depth, moulded: 8.00 m
- Design draft: 6.00 m
- Maximum draft: 6.20 m
- Gross Tonnage: 3157
- Net Tonnage: 948
- Deadweight: 2200 t

Machinery

- Main Engines: 2 x 5369 kW (Total 14,400 bhp) Bergen diesel engines

- Propellers: 2 x Ulstein CP propellers in Kort nozzles
- Rudders: 2 x Ulstein High Lift flap rudders.
- Steering Gear: 2 x independent Ulstein Tenjford electric-hydraulic steering gear max angle 45, max flap angle 55
- Azimuth Thruster: 1 x 1119 kW (1500 bhp) forward swing-up azimuth thruster, CPP, independently diesel driven
- Forward Tunnel Thruster: 1 x 895 kW (1200 bhp), CPP
- Aft Tunnel Thruster: 1 x 895 kW (1200 bhp), CPP
- Generators: 2 x Shaft, 1920 kW (2575 hp), 450 V, 60/50 hz,
- Auxiliary: 2 x 370 kW (496 bhp), 450 V/230 V, 3-phase, 60 hz
- Emergency: 1 x 125 kW (167 bhp), 450V/230 V, 3-phase, 60 hz

Control Systems

- Consoles: full navigation console forward
- Full navigation & main winch control console aft, full 360° view from bridge
- 9 camera system, views of decks fore & aft, winch drums, thruster rooms, etc, monitors at fore & aft consoles.
- Joystick: 1 x Ulstein Poscon, independent

from DP joysticks with 4 stations

- 2 x wind sensors
- 2 x Sperry Navigat x mk1

Performance

- Economic Speed: 11.5 knots
- Super Economic Speed: 10.5 knots

Towing and Anchor Handling

- Bollard Pull: DNV certified
157 t continuous bollard pull
163 t maximum bollard pull
169 t continuous bollard pull with forward azimuth thruster running
- Winch: Ulstein Brattvaag, 272 tons, 3 drums
- Main Towing: 1 x declutchable tow drum
Capacity - 1560 m x 76 mm dia. wire
Brake holding on 1st layer - 400 t
1st layer max. pull 270 t @ 0-6.5m/min
- Storage Drums: 2 x pennant wire storage drums, 15 t line pull @ 0-28 m/min, capacity 1500 m X 76 mm wire 6 x Iceberg towlines, total length 2000 m on storage drums
- Spare Tow Wire: 1 x spare tow wire drum with wire, 15 t @ 0-28 m/min
Capacity - 1500 m x 76 mm dia. wire



ATLANTIC TOWING

Atlantic Towing

Halifax, Nova Scotia

Saint John, New Brunswick

St. Johns, Newfoundland

Tel: 506-648-2750

Webpage: www.atlantictowing.com

• Cable Lifters: 2 x non-declutchable cable lifters, one for 76mm chain port and one for 84mm chain starboard, fitted outside of the anchor-handling drums

Breaking 160 tonnes, Rendering 198 tonnes, Stalling 131 tonnes

• Chain Lockers: 2 x chain lockers each 134 m³, total 268 m³

Locker Capacities, 30% broken stowage

64mm = 2085.14m, 76mm = 1339.9m,

89mm = 1158.42m, 89mm = 986.94m,

102mm = 794.92m, 114mm = 760.56m

• Karmforks: 2 x Karmforks, 750 t SWL.

Remote control from wheelhouse and aft deck

• Towpins: 4 x Towpins, hydraulic. Remote control from wheelhouse and aft deck

• Stern Roller: 1 x 6 m x 2.7 m dia., 440 t SWL

• Grapnel: 1 Grapnel X 150 t, Ansel Jones Forgings

• J - Hook: 1 J-Hook X 150 t, Ansel Jones Forgings

Deck Machinery

• Tuggers: 2 x 15 t @ 0-31 m/min, hydraulic, capacity 100 m x 19 mm wire

• Capstans: 2 x 10 t @ 0-20 m/min, hydraulic, aft main deck

• Windlass: 1 x 12 t @ 0-20m/min, hydraulic

• Anchors: 2 x stockless anchors, 2850 kg each

• Crane: 1 x Hydramaskin, 5 t, 13 m reach, stbd 1 x 20 t sub-sea crane, 1 x 20 t Iron Fist Crane @ 12 m

• FRC Davits: 1 x Hydramaskin heave compensated davit, stbd 1 x Hydramaskin davit, port

• 1 x Iron Fist articulating deck crane, 20 t SWL all radius

Discharge Rates

• Potable Water: 250 m³/hr - 9.0 bar pressure relief @ 9.7 bar

• Drill Water: 250 m³/hr - 9.0 bar pressure relief @ 9.7 bar

• Fuel: 250 m³/hr - 9.0 bar pressure relief @ 9.7 bar

• Mud: 75 m³/hr - 18.0 bar pressure relief @ 19 bar

• Brine: 100 m³/hr - 18.0 bar pressure relief @ 18.7 bar

• Base Oil: 120 m³/hr - 9.0 bar pressure relief @ 9.7 bar

• Dry Bulk: 80 m³/hr - 5.6 bar, 4 aeration jets per tank 2 Tamrotor compressors, 22.8 m³/min each, pressure 5.6 bar. Pressure re-

lief @ 6.1 bar.

Note: Discharge rates for dry bulk will differ with product. All pumping arrangements are totally redundant with equivalent backup/standby pump.

Capacities/Tankage

• Clear Deck Space: 555 m²

• Deck Cargo: 1100 t

• Deck Loading: Cargo deck - 5 t/m² Anchor handling deck - 10 t/m²

• Fuel: 991 m³

• Potable Water: 704 m³

• Drill Water: 938 m³

• Brine/Glycol: 401 m³

• Liquid Mud: 417 m³

• Base Oil: 200 m³

• Dry Bulk: 4 tanks totaling 283 m³

• Recovered Oil: 1100 m³

• Cargo Deadweight: 2200 t

• Tank Washing: 4 x Butterworth, hot and cold water mud tank washing

• Tank Recirculation: All tanks are capable of recirculation

• Tank Agitators: 4 x hydraulic agitators in mud tanks. Also capable of individual recirculation.

External Fire Fighting (FiFi II)

• Pumps: 2 x Jason HGTF 1-450800, 3,600 m³/hr. (Total: 7,200 m³/hr)

• Monitors: 2 x Jason FM 400 HD, 3,600 m³/hr, (Total: 7,200 m³/hr)

• Bridge remote controlled System, DNV FiFi II specifications for operational throw distances

• External drenching system,

• Foam generator portable Turbex MKII, 200 m³/min consumption 4.5 L/min

• 6 additional fireman's suits 8 total/ breathing apparatus, spare BA bottles, and recharging compressor.

Lifesaving

All equipment as per SOLAS, CCG, and Standby Vessel Letter of Compliance.

• Survivor Capacity: 300 persons

• Rescue Craft: 2 x Springer MP 271, 20 person capacity, diesel, water jet propulsion, FRC

• Liferrafts: 4 x 25 man, 1 x 16 man, 1 x 20 man (Total Capacity: 136 persons)

• Rescue Frame: 1 x Daycon Scoop

• EPIRB: Tron 1 x handheld & 1 x hydrostatic release

• Sarts: 2 x Tron

• Em.VHF: 3 x Norcontrol with long life

batteries

Electronics

• Radars: 1 x Furuno 2835S, ARPA, S-band (10 cm), 28 inch display

• 1 x Furuno FR-2110, ARPA, X-band (3 cm), 21-inch display.

• 1 x Furuno FR-1510 MK-3, aft bridge slave radar

• Auto Pilot: 1 x SIMRAD AP 50

Fully integrated with ECDIS

• Electronic Chart: 1 x Norcontrol SeaMap 1021

Integrated, radar, and DGPS

• Gyro(s): 2 x Sperry Navigat x mk1.

Integrated with DP system

• Depth Sounder: 1 x Skipper GDS 101

• Speed Log: 1 x Consilium

• VHF DF: 1 x Taiyo TD-L1550

• Helicopter Beacon: 1 x Skanti TU 820B

• Weather Fax: 1 x JRC JAX-9A

• AIS: 1 x AIS (Simrad A170)

• SSAS: 1 x SSAS (Thrane&Thrane Capsat TT 3000SSA)

Communications Equipment

• GMDSS: Sailor, compliant for areas A1, A2, and A3

• Telex/Email: 2 x Sailor Sat 'C' with telex and email

• Aeronautical Radio: 1 x Jotron TR-601

• Helicopter Beacon: 1 x Skanti TU 820B

• Portable UHF's: 3 x Motorola

• Portable VHF's: 2 x Motorola

• Cell phone/fax: 1 x Sanyo & 1 x Samsung portable

• Fleet 77: 1 x voice

• Iridium: 1 x voice

• Internal phone TEC PBX system, all cabins and areas, complete access to each other and all external communications

• P.A. system, all areas of the vessel, inside and outside, sleeping areas if required

DP Reference System

• DGPS: 1 x Shipmate GN 30 2 Simrad DGPS 116

• DP System: Kongsberg SDP 21, fully redundant system

• Reference Systems: 2 x DGPS Simrad DPS 116

• HIPAP/HPR Simrad 410, with 1 x 3000 m depth

• Transponder Fanbeam Laser - MDL MK III

• Sensors: 2 x MRUs - Seatek MRU 5



ATLANTIC TOWING

Atlantic Towing

Halifax, Nova Scotia

Saint John, New Brunswick

St. Johns, Newfoundland

Tel: 506-648-2750

Webpage: www.atlantictowing.com

Accommodation

- 3 x 1 berth cabins
- 14 x 2 berth cabins
- 2 x 4 berth cabins
- Total: 39 berths. All cabins with ensuite washrooms.
- Additional Spaces:
 - 1 x Ship's Office, with computer system (networked to Wheelhouse and Engine Control room) and photocopier
 - 1 x Lounge Area
 - 1 x Smoking Room
 - 1 x Messroom
 - 1 x Hospital, separate berth, examination table, and all associated medical equipment required by SOLAS and CCG stand-by regulations
 - 1 x non-survivors locker

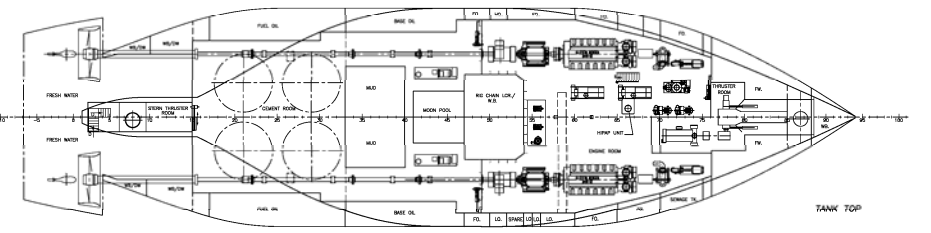
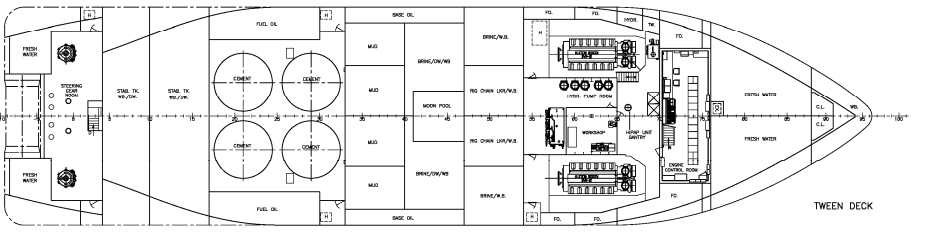
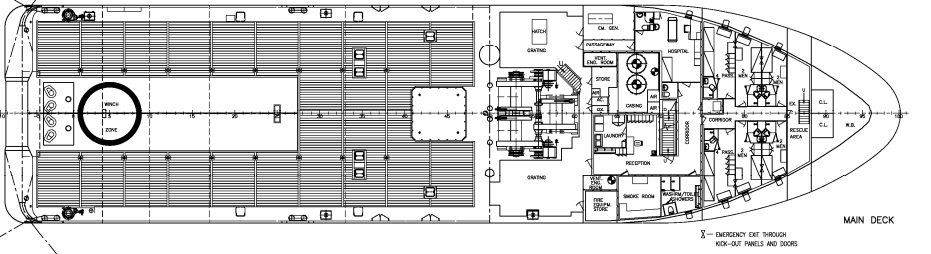
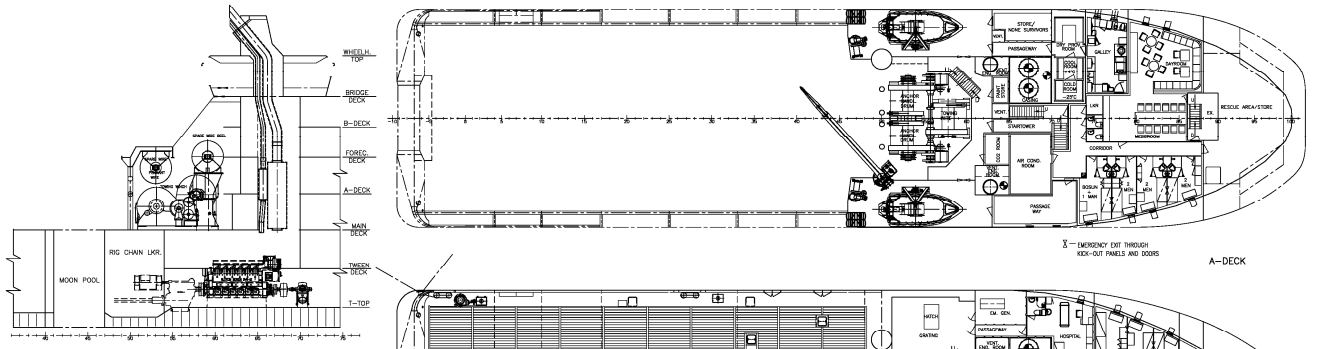
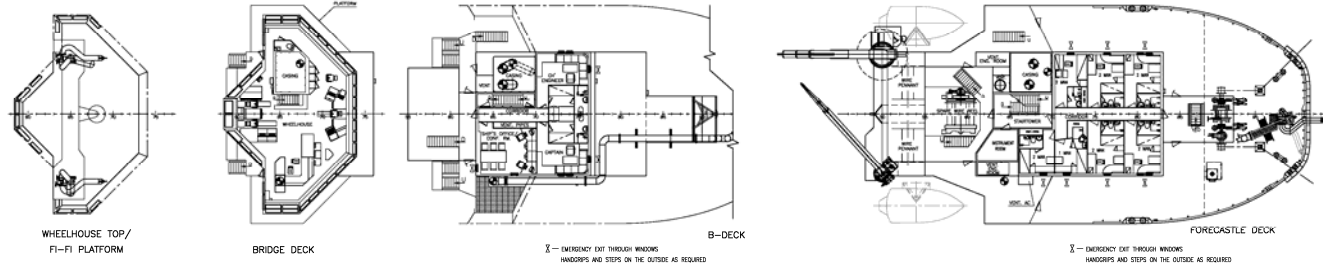
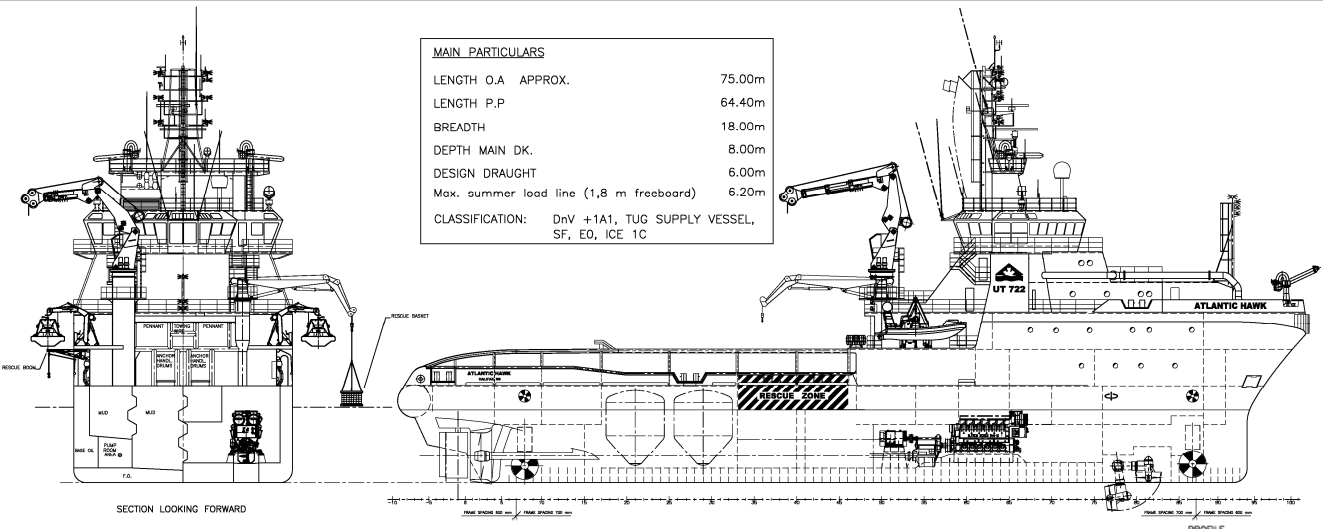
Miscellaneous

- Fitted with two passive roll reducing stability tanks below the main deck
- Approved for the Carriage of Noxious liquids (DNV)
- Approved for the Carriage of Dangerous Goods (Transport Canada).
- Fitted with 1 x Color Light CLO3-11 searchlight forward and 1 x 2000W-searchlights stbd and 1 x Color Light CLO3-11 port. aft all remotely controlled from wheelhouse
- Fitted with moon pool (4.2 m x 42 m) capable of operating a work class ROV
- Rolls Royce/Coastal 3D Stability Program fitted. Program software is interactive with vessel UMAS tank sounding system. Provides accurate and up-to-date stability info during all vessel loading and lifting operations.



MAIN PARTICULARS

LENGTH O.A APPROX. 75.00m
 LENGTH P.P 64.40m
 BREADTH 18.00m
 DEPTH MAIN DK. 8.00m
 DESIGN DRAUGHT 6.00m
 Max. summer load line (1,8 m freeboard) 6.20m
 CLASSIFICATION: DnV +1A1, TUG SUPPLY VESSEL,
 SF, EO, ICE 1C



The design/performance in the primary hull and deck is the responsibility of the designer. The designer shall be responsible for the design of the hull and deck and shall be liable for the design of the hull and deck. The designer shall be responsible for the design of the hull and deck and shall be liable for the design of the hull and deck.

NO.	REVISION	DATE	BY	CHKD	APP'D
1	ISSUED FOR CONSTRUCTION	98/07/21	MM	MM	MM
2	REVISION	98/07/21	MM	MM	MM
3	REVISION	98/07/21	MM	MM	MM

NO.	REVISION	DATE	BY	CHKD	APP'D
1	ISSUED FOR CONSTRUCTION	98/07/21	MM	MM	MM
2	REVISION	98/07/21	MM	MM	MM
3	REVISION	98/07/21	MM	MM	MM

NO.	REVISION	DATE	BY	CHKD	APP'D
1	ISSUED FOR CONSTRUCTION	98/07/21	MM	MM	MM
2	REVISION	98/07/21	MM	MM	MM
3	REVISION	98/07/21	MM	MM	MM

GENERAL ARRANGEMENT

UTSTEIN SHIP TECHNOLOGY AS

1:200

97/7743

H-1-5131