

# ATLANTIC RAVEN

ANCHOR HANDLING TUG SUPPLY VESSEL



## Registration

Built: Orskov, Frederikshavn, Denmark  
1999  
Flag: Canadian  
Official Number: 835842  
IMO Number: 9187942  
Call Sign: CFN5827  
Vessel Type: Anchor Handling Tug Supply  
Vessel  
Classification: DNV  
Main Class: ★ 1A1  
Additional Class: Fi-Fi II, SF, OILREC,  
ICE-C, EO, DYNPOS-AUTR, DK(+), HL  
(2.5)

## Principle Dimensions

- Length overall: 75.00 m
- Length BP: 64.40 m
- Breadth, moulded: 18.00 m
- Depth, moulded: 8.00 m
- Design draft: 6.00 m
- Maximum draft: 6.60 m
- Gross Tonnage: 2921
- Net Tonnage: 931
- Deadweight: 3200 t

## Machinery

- Main Engines: 4 x 2684 kW = 10740 kW  
(Total: 14,400 bhp) Bergen Diesel Type  
BRM-6
- Propellers: 2 x 3800 mm in nozzle
- Rudders: 2 x Ulstein high lift/  
2 independent electric hydraulic steering  
gears
- Azimuth Thruster: 1 x 895 kW (1200  
bhp) retractable Ulstein, CPP
- Forward Tunnel Thruster: 1 x 895 kW  
(1200 bhp) Ulstein, CPP
- Aft Tunnel Thruster: 1 x 895 kW (1200  
bhp) Ulstein, CPP
- Generators: 1 x main engine SB and 1 x  
PS via PTO, 2240kW ( 3004 bhp) 440V, 60  
Hz each
- Auxiliary: 2 x 350 kW ( 470 bhp),  
440V/60Hz
- Emergency: 1 x 150kW ( 201 bhp),  
440V, 60Hz

## Performance

- Economic Speed: 12.5

## Towing and Anchor Handling

- Bollard Pull: 169 t
- AHT Winch: Brattvaag SL270WX/  
SBSL300WX, three drums with one towing

drum and 2 AH drums

- Towing drum capacity/1500 m x 76 mm
- AH drum capacity/1200 m x 76 mm
- Brake load/450 t
- Winch capacity/272 t towing drum 1 layer
- 2 x 20 t storage reels 2200 m x 76 mm

## Deck Machinery

- Tuggers: 2 x 12 t Tuggers
- Capstans: 2 x 15 t Capstans
- Windlass
- Anchors: 2 Anchor Spek 2850 Kg
- Chain 916 m. 46 mm K3
- 2 x AH Tongs KARM FORK - 89mm
- 4 Towing pin
- Crane: 1 crane 5.0 t/8-12 m
- Stern roller 6.0 t x 3.5 t diam.-SWL 440 t
- Wildcat (gipsy) 51mm x 83mm, 25mm x  
76mm, 25mm x 83mm



ATLANTIC TOWING

Atlantic Towing

Tel: 506-648-2750

Halifax, Nova Scotia

Webpage: [www.atlantictowing.com](http://www.atlantictowing.com)

Saint John, New Brunswick

St. Johns, Newfoundland

## Discharge Rates

- Potable Water: 1 x 250 m<sup>3</sup>/hr 9 bar
- Drill Water: 1 x 250 m<sup>3</sup>/hr 9 bar
- Fuel: 1 x 250 m<sup>3</sup>/hr 9 bar
- Ballast: 1 x 250 m<sup>3</sup>/hr 9 bar
- Mud: 2 x 75 m<sup>3</sup>/hr 18 bar
- Brine: 2 x 75 m<sup>3</sup>/hr 18 bar
- Base oil: 1 x 125 m<sup>3</sup>/hr 9 bar
- Dry Bulk: 2 screw compressor at 5.6 bar/  
air capacity 27m<sup>3</sup>/min each

## Capacities/Tankage

- Deck Cargo: 1000 m<sup>3</sup>
- Cargo Deck Area: 550 sq. m
- Clear Deck Length: 37 m
- Clear Deck Breadth: 15.5 m
- Fuel Oil Tanks: 977 m<sup>3</sup>
- Potable Water: 764 m<sup>3</sup>
- Ballast Water Tanks: 1435 m<sup>3</sup>
- Drill Water: 1435 m<sup>3</sup>
- Rec-Oil: 1306 m<sup>3</sup>
- Chain Lockers: 533 m<sup>3</sup>
- Liquid Mud: 444 m<sup>3</sup>
- Brine: 565 m<sup>3</sup>
- Base Oil: 197 m<sup>3</sup>
- Dry Bulk: 4 tanks totaling 284m<sup>3</sup>
- Dispersant: 6 m<sup>3</sup>

## Lifesaving

- (SOLAS for 35 persons)
- MOB boat: 1 - 25 kn speed with approved  
one arm davit

## Navigation Equipment

- 2 Gyrocompass
- Autopilot
- Echosounder
- Speed-log
- GMDSS Station A3
- VHF Helicopter frequency
- 1 x 10 cm ARPA Radar
- 1 x 3 cm TM Radar

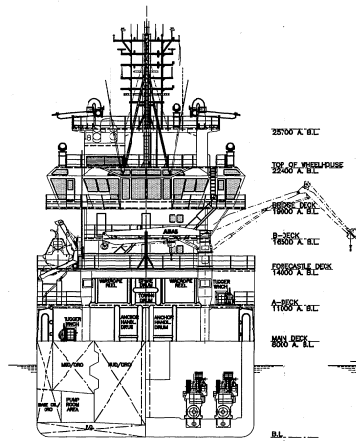
## DP Reference Systems

- 2 DGPS Satellite Navigator
- DGPS Interface

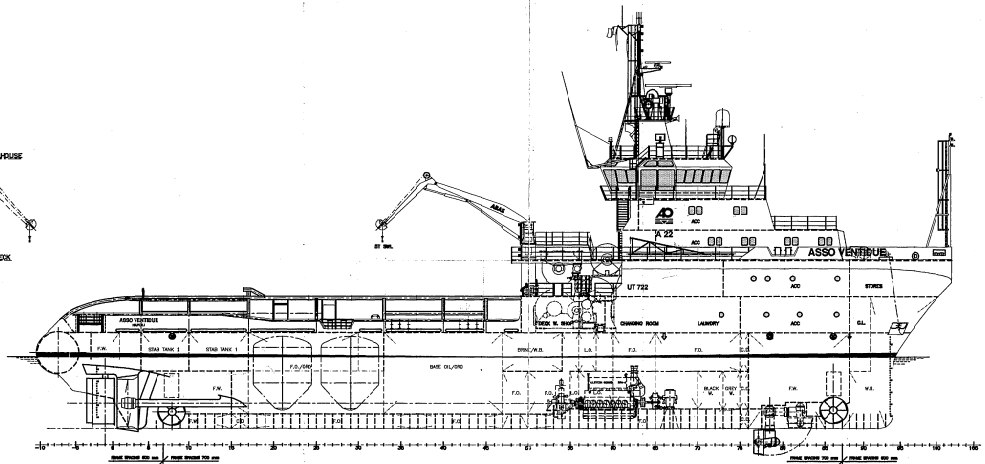
## Accommodation

- 11 x (1) berth cabins
- 8 x (2) berth cabins
- 2 x (4) berth cabins
- (All cabins with private bathroom.)

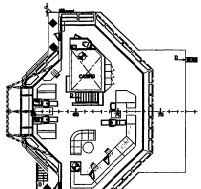




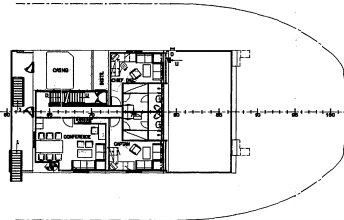
SEEN FROM AFT



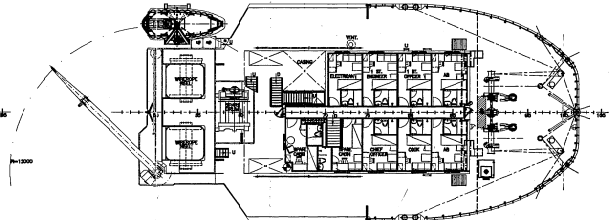
PROFILE



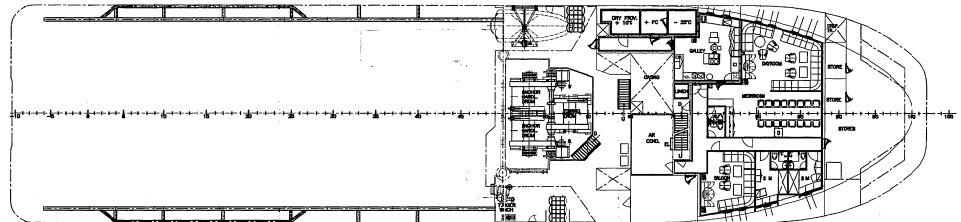
BRIDGE DECK



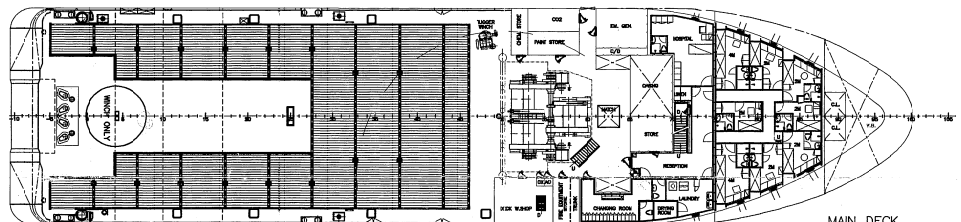
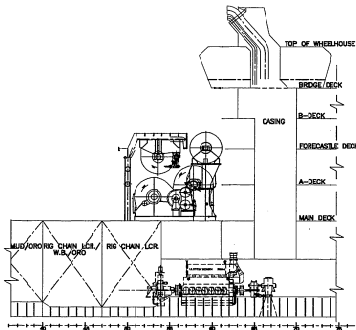
B-DECK



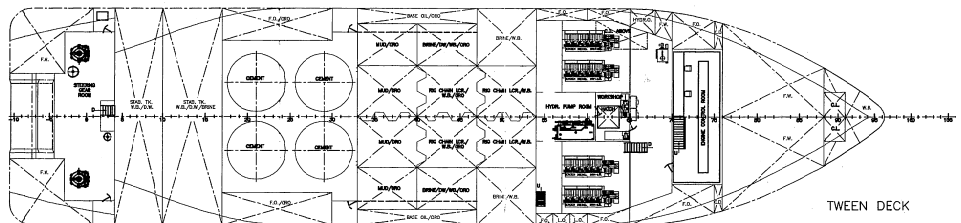
FORECASTLE DECK



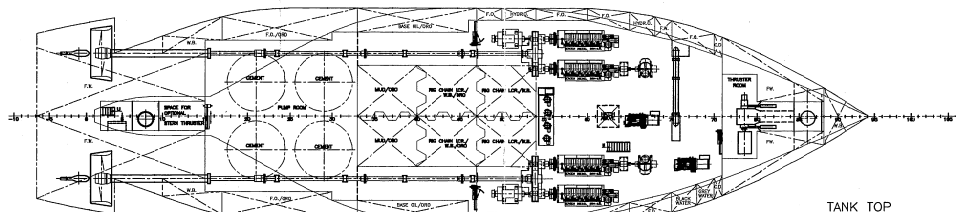
A-DECK



MAIN DECK



TWEEN DECK



TANK TOP

MAIN PARTICULARS

LENGTH O.A. approx.	75.00m
LENGTH P.P.	64.40m
BREADTH mid.	18.00m
DRAUGHT SCANTLING	6.60m
DRAUGHT DESIGN	6.00m
DEPTH, MAIN DECK.	8.00m
DEPTH, A-DECK.	11.00m
DEPTH, FORECASTLE DECK.	14.00m
DEPTH, B-DECK.	16.50m
DEPTH, BRIDGE DECK.	19.00m

Ed. Change	Date	IniL.
<b>ØRSKOV STEEL SHIPYARD</b> FREDERIKSBORG - DENMARK		
GENERAL ARRANGEMENT		
<i>A/22</i>		
Scale	1:200	
Drawn	JS	
Table	22/11/99	
Replaces USTEN DW. P-1-4119	250693	
Draw.no.	210-01-05	
Date:	P. 1997-05-01 10:05	