

ATLANTIC TERN

AHTS / STANDBY RESCUE



Registration

- Built: Vito Steel Boat and Barge Construction Ltd, Delta, BC, Canada
- Commissioned: 1975
- Major Refit: 1998
- Flag: Canadian
- Vessel Type: AHT / Stand-by / PSV
- Classification: DNV +1A1, Tug, FiFi 1, Ice-A*,EO

Principle Dimensions

- Length Overall: 63.89 m
- Breadth: 13.72 m
- Depth Moulded: 5.56 m
- Design Draft: 4.79 m
- Gross Tonnage: 1,429
- Net Tonnage: 422
- Dead Weight: 1,050

Machinery

- Main engines: 2 x Nohab Polar, F216VD825, 2 x 2588 kW (2 x 3470 bhp)
- Reduction Gear: 2 x Lohmann & Stolterfoht, GUH 710 (3.619:1)
- Propellers: 2 x 2850 mm, 4 blades, CPP System KaMeWa number 9300
- Auxiliary Engines: 3 x Caterpillar,

D343TA

- Auxiliary Engine/Azimuth : 1 x Azimuth drive Caterpillar, Marine 3512
- Generators:
 - 2 x Stamford, 200 kW (268 bhp), 460V AC/ 3 ph/ 60 Hz,
 - 1 x Letag, 10EXR-315M6:4, 140 kW (188 bhp), VarG.
- Azimuth Thruster: 1 x Azimuth thrust Veth, VZ-800-LRS, 800 kW (1072 bhp)
- Bow Thruster: 1 x Bowthrust Brunvoll, SPK-350, 260 kW (349 bhp)

Performance

- Max Speed: 14 knots
- Economic Speed: 10 knots
- Standby: 2-5 knots

Fuel Consumption

- Steaming maximum : 21 m³/day
- Economic Speed: 12 m³/day
- Standby: 4-6 m³/ day
- Gen. at anchor or in port: 0.5 m³/day

Towing and Anchor Handling

- Bollard Pull: 75 t
- Anchor handling/ towing winch Burrard

Iron Works, HKDW double-drum water-fall

- Drum diameter 0.9 m.
- Drum capacity, Tow drum 920 m. x 57 mm, Anchor drum 488 m x 57 mm
- Pull/Break power 136 t/ 182 t
- Performance speed high/ low 136 t at 6.1m/ min / 9 t at 45.7m/ min
- Stern roller L. 3.66 m, Diameter: 1.83 m, SWL 150 t.
- Tailgate opening 3.85 m.

Deck Machinery

- 2 x Windlass Nolan Lowe Power Corp., W-300-13-H, 9 t, 36 m/ min.
- 2 x Tug winch Nolan Lowe Power Corp., WW-112, 5/ 9 t
- 1 x Capstan Nolan Lowe Power Corp., C-20-150, 4 t
- 1 x Hydramarine Deck crane HMC 1077 L 30 - 12, 12 m, 2.7 t
- 2 x Hydramarine MOB- davit

Capacities/Tankage

- Deck load: 700 t
- Deck cargo area: 302.50 m²
- Ballast: 180 t



ATLANTIC TOWING

Atlantic Towing

Tel: 506-648-2750

Halifax, Nova Scotia

Saint John, New Brunswick

St. Johns, Newfoundland

Webpage: www.atlantictowing.com

External Fire Fighting (Fi Fi I)

- 2 x Jason Water Monitor FM 300 HD
- 2 x Fire Water Pump Worthington, 300-LNN-725, Q = 2 400 m³ / h, H = 170 mlc
- 2 x Jason Step-Up Transmission SRG-C-355-V, power out 1 380 kW
- 1 x Jason self protection spray system

Lifesaving

- 1 x MP 741 Springer
- Safety equipped for 49 crew
- 1 x Grapnel Gun
- 1 x Line Thrower PLT 230
- 53 x Survival suits
- 98 x Life Jackets

Electronics

- 1 x Radar 10 cm Furuno, FR-2130 Arpa
- 1 x Radar 3 cm Furuno, FAR-2117 Arpa
- 1 x Gyrocompass Sperry, MK 37, mod.1
- 1 x Sat compass Furuno SC-50
- 1 x Auto pilot Anschultz, Pilotstar D
- 1 x AIS Transas SAAB R4
- 1 x Echo sounder Furuno FCV-291
- 1 x Plotter MaxSea 10.3.5 Cm93
- 1 x GPS Furuno GPS/WAAS GP - 32
- 1 x DGPS Trimble Navtrack

GMDSS A1-A2-A3

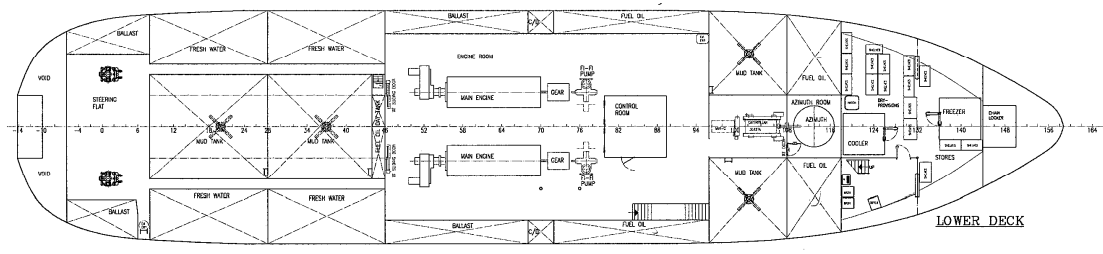
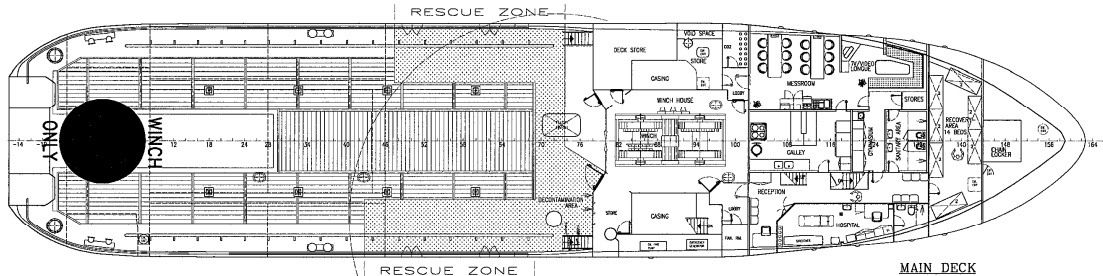
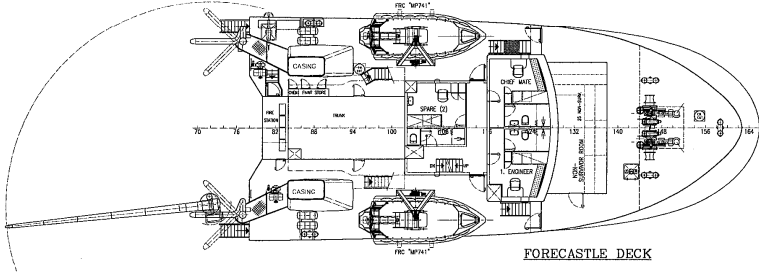
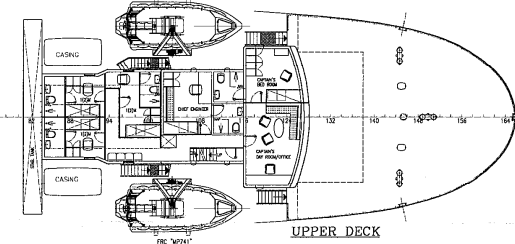
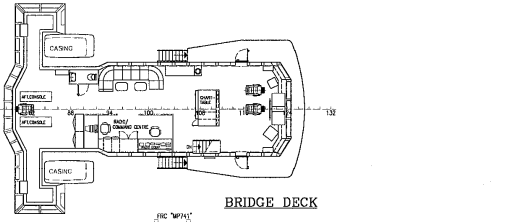
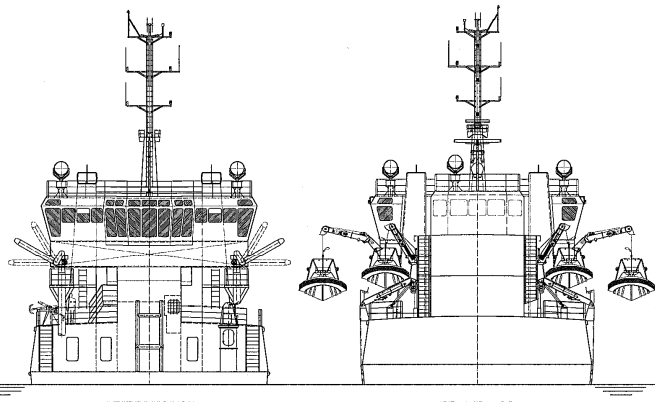
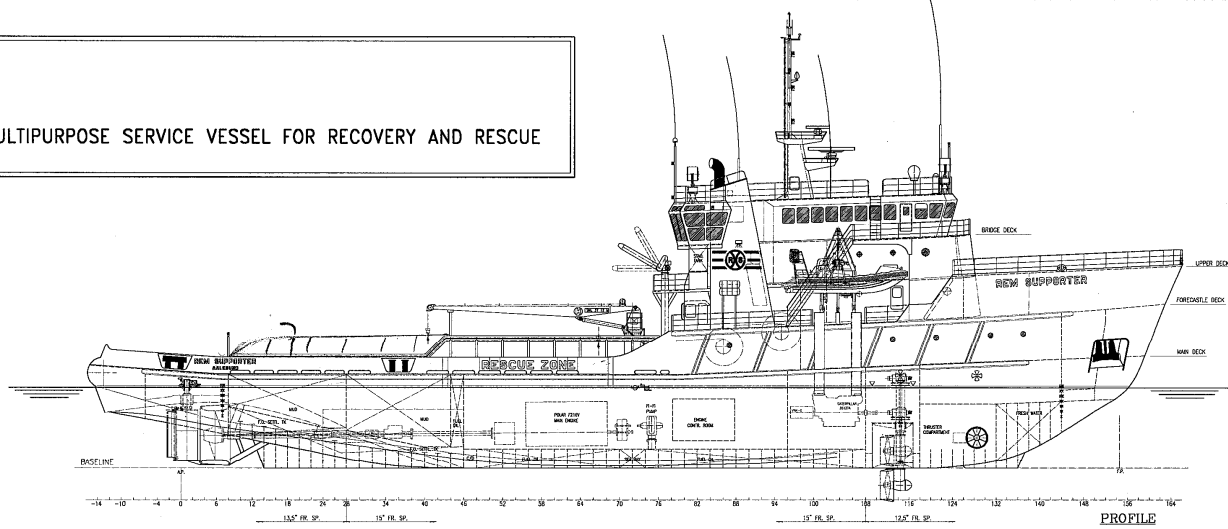
- 2 x VHF Shipmate RS 8300
- 1 x VHF Sailor RT 2047
- 1 x VHF Furuno FM 8500
- 1 x VHF Raytheon, type RAY 55
- 2 x UHF Motorola, type GM 360
- 3 x UHF ICOM BC-160
- 1 x Joystick system Kongsberg Simrad SJS01

Accommodation

- 12 passengers max



MULTIPURPOSE SERVICE VESSEL FOR RECOVERY AND RESCUE



MAIN DIMENSIONS:

LENGTH O.A.	83.89 m
LENGTH P.P.	54.86 m
BEAM	13.72 m
DEPTH MLD.	6.56 m
DRAFT MAX.	4.788 m
HORSEPOWER	24550 = 7040 SHP
ACCOMMODATION FOR 12 PERSONS	
RESCUE CAPACITY 250 SURVIVORS	
CLASS: DNV + IAL, Tug, Fire-Fighter 1, Ice-1A, BD	

TANK CAPACITIES

FUEL OIL	574 m ³
FRESH WATER	386 m ³
BALLAST WATER	180 m ³
MUD	412 m ³

REV.	DESCRIPTION	DATE APPR.	DATE REV.	SO. NO.
1	NEW RIDER AND STEERING GEAR	22.04.11	01	
2	FAIR & CHEMICAL STORES ADDED	14.03.99	01E	
3	ADDITIONAL ITC ADDED TO FORECASTLE DECK	04.03.99	01F	
4	CHANGES TO '98 PLAN	13.02.98	01T	
5	RESCUE ZONE AS SHOWN PANEL DECK COULD BE INCORPORATED INTO STRUCTURE OVER DECK WITH AVOIDANCE OF FRESH WATER AND MESSROOM AIRWAYS ADJUSTED			
6	CHANGES TO BRIDGE DECK INCLUDING ITC '98 PLAN			
7	NEW BRIDGE DECK STRUCTURE INCLUDING ITC '98 PLAN AND STEERING GEAR			
8	NEW BRIDGE DECK STRUCTURE INCLUDING ITC '98 PLAN AND STEERING GEAR			
9	NEW BRIDGE DECK STRUCTURE INCLUDING ITC '98 PLAN AND STEERING GEAR			
10	NEW BRIDGE DECK STRUCTURE INCLUDING ITC '98 PLAN AND STEERING GEAR			
11	NEW BRIDGE DECK STRUCTURE INCLUDING ITC '98 PLAN AND STEERING GEAR			
12	NEW BRIDGE DECK STRUCTURE INCLUDING ITC '98 PLAN AND STEERING GEAR			
13	NEW BRIDGE DECK STRUCTURE INCLUDING ITC '98 PLAN AND STEERING GEAR			

GENERAL ARRANGEMENT
 WEST MARITIME AS
 NAVAL AND MARINE ENGINEERS
 HORNØY, N-4010, NORWAY
 WWW.WESTMARTIME.COM

THIS DRAWING IS THE PROPERTY OF WEST MARITIME AS AND MUST NOT BE REPRODUCED OR MADE AVAILABLE FOR ANY THIRD PARTY WITHOUT THE CONSENT OF WEST MARITIME AS.