



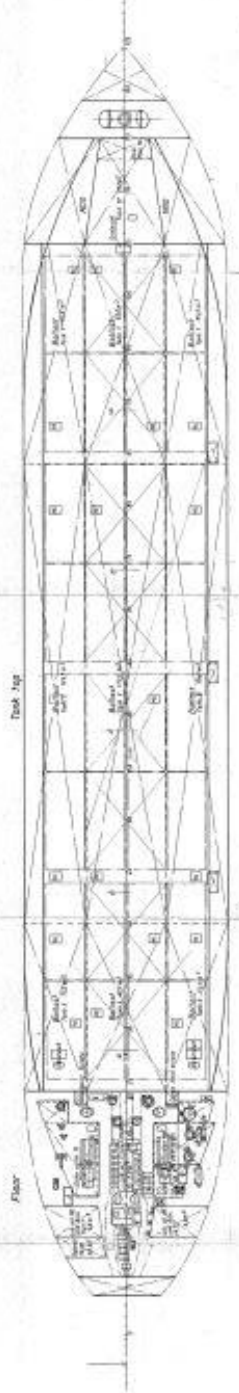
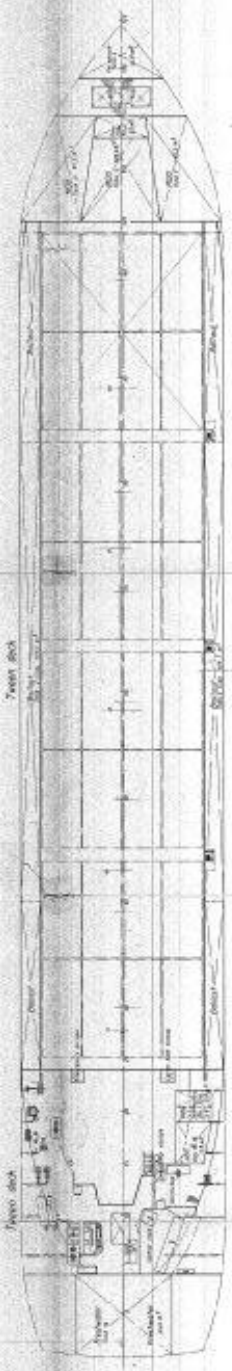
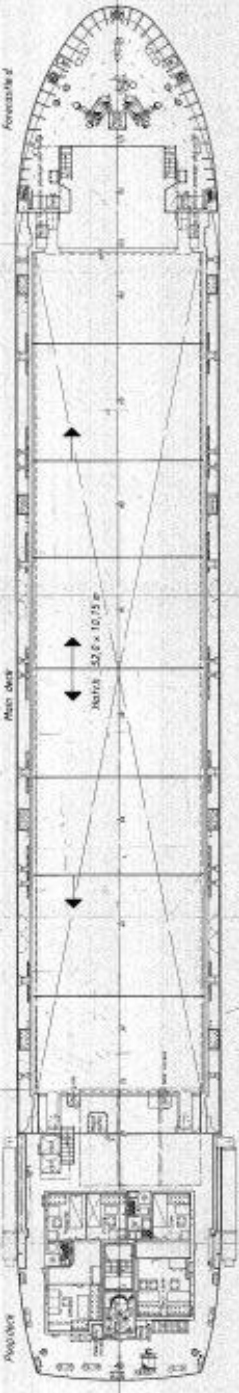
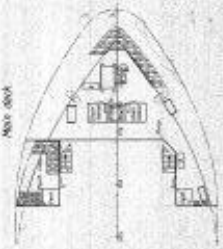
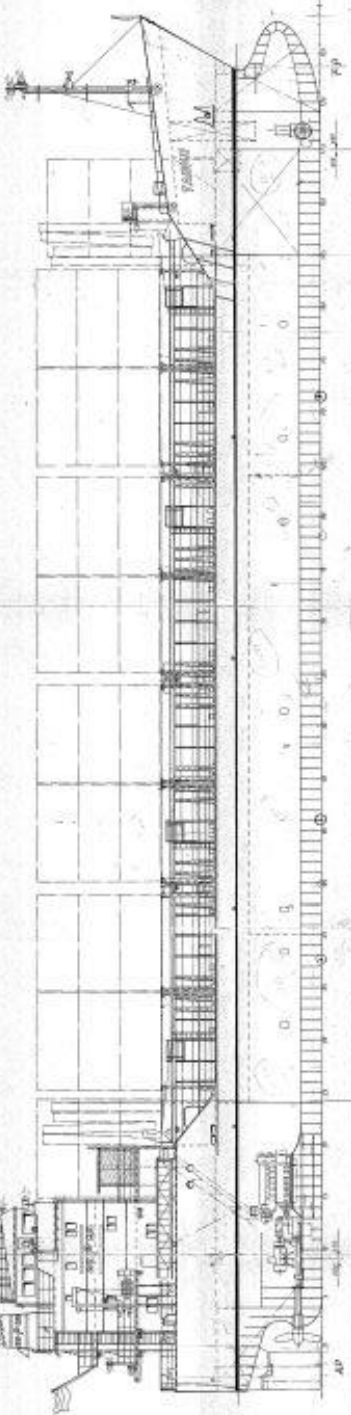
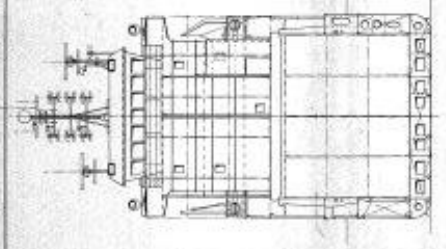
## M.V. ” ARSLAN 1 ”

Flag .....	Antigua flag
Built .....	1993
Call sign / imo number .....	V2QP2 / 9050620
Communications .....	Email : arslan1@skyfile.com
.....	Phone : gsm +49 173 7323205
Type .....	Gearless fully boxed singledecker
Class .....	GL highest
P + I Club.....	P & I Standard, London
Dwat .....	3057 mt
Dwcc summer basis 50 tons bunkers / draft .....	About 2950 mt basis 5,25 m sw draft
Dwcc winter basis 50 tons bunkers / draft .....	About 2850 mt basis 5,15 m sw draft
GT/ NT .....	2400 gt / 1248 nt
Loa/ beam .....	85,35 m / 12,60 m
Draft in ballast with 50 ts bunkers .....	Max 2,2 m fore and 4,6 m aft
Distance keel to antenna .....	26,00 m
Distance keel to hatch coaming .....	About 9,25 m
Dept moulded.....	6,50 m
Cubic feet capacity: grain/bale.....	150.700 cbft
Timber cap. ....	Abt 4500 cbm lp seasoned, but not fitted
Container capacity .....	233 teu or ? feu
Stackweight TEU / FEU .....	Tanktop: 60 / 100 ts / hatch: 30 / 40 ts
Hatches .....	1 hatch 52,00 x 10,15 m
Hold .....	1 hold 52,00 x 10,15 x 7,93 m height
Tanktop / hatch max pressure .....	Tanktop 13 ts m2 / hatch 1,75 ts m2
Type of hatch .....	Mcgregor steel, folding fore/aft outside
Bulkheads .....	None
IMO Cargo fitted .....	Most IMGC classes but no 1, sub checking
Grainfitted.....	Only with full hold, sub checking
Speed/Consumption.....	About 10,5 knots on about 5 mts gasoil
Bunker capacity .....	280 mtons
Ballast capacity.....	1171 mts
Timber fitted / Slings / Tarpaulins .....	Not fitted
Magnet discharge.....	no magnets
Other features : .....	..

All details are W. O. G. but believed to be correct.

**ECHOSHIP** ApS

Kullinggade 31 B - P.O. BOX 232  
DK - 5700 SVENDBORG - DENMARK -  
Phone +45 6221 5666 - Fax +45 63217700  
EMAIL : [Chartering@echoship.dk](mailto:Chartering@echoship.dk)  
Webite : [www.echoship.dk](http://www.echoship.dk)



Konstruktion  
 Projekt: 3037  
 1980

Länge 1.4	65.55 m	Länge 2.0	280'
Länge 2.0 1.1	86.05 m	Länge 2.0 2.0	285'
Breite 0.50	12.66 m	Breite 0.50	41'
Schraube	2.53 m	Durchmesser	27"
Leistung	525 kW	Drehmoment	97.1 kNm
Schiffsbauart	13 45 - 3898		

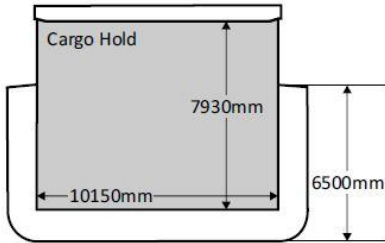
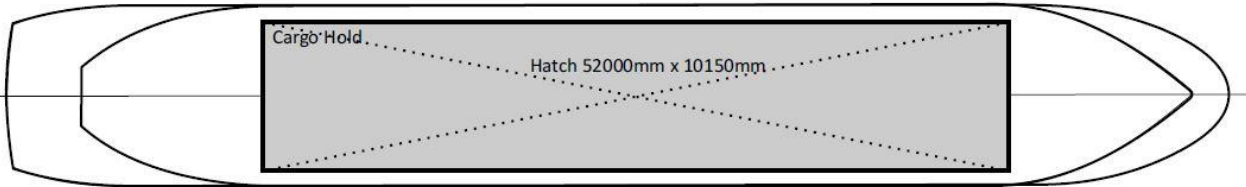
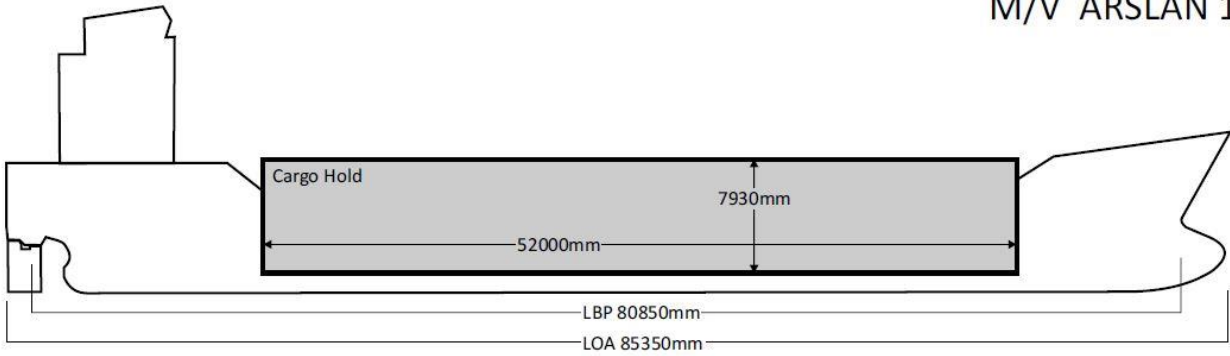
Klasse: Gewöhnliche Klasse  
 - "Stärkung für Heavy Cargo"  
 - "Ausgerüstet für Lärmschutz von Containers"  
 - "Ausgerüstet für 20' Container"

Verrichtungsgegenstände/Signet: 1000  
 1000  
 1000

1980  
 1980  
 1980

BRAND WERT  
 D-2350 O. DE. 1000  
 1980

# M/V ARSLAN 1



GRT	2400
NRT	1248
LOA	85.35m
LBP	80.85m
Breadth	12.60m
Depth	6.50m
LightShip	1321mt
Deadweight (Summer)	3037
Max.Draft(Summer)	5.200m
AirDraft(Keel-Mast Top)	26.00m

CargoCapacity	
Grain	4274cbm / 150091.4cbf
Bale	427 cbm / 150077.3cbf
Fuel Capacity	317.8mt
FreshWaterCapacity	65mt

HatchCoverLoad	1.75t/m3
Cargo Hold Load	13t/m3
Container	233TEU

Suez GT	2457
Suez NT	2212
Panama GT	2579
Panama NT	1775

Empire 004 9011 30 026







Cargo hold seen from aft to fore – no narrowings



And seen the other way around



Loading woodpulp in bales aftpart, in Sweden.



Starting up again after a long layup period.