



Miclyn Express Offshore Pte Ltd
 3 Harbourfront Place
 #11-01/04 Harbourfront Tower 2
 Singapore 099254
 Tel: +65 6545 6211
 Fax: +65 6545 9211
 Email: marketing@miclynexpressoffshore.com
 www.miclynexpressoffshore.com

MAGELLAN 2 52M, 112.5 TBP ANCHOR-HANDLING TUG



PRINCIPAL PARTICULARS

Length Overall	52.00 m
Length Waterline	48.80 m
Breadth Moulded	15.00 m
Depth Moulded	6.50 m
Draft (max)	5.70 m
Year Built	2011
Class	Bureau Veritas
Notation	I HULL MACH Tug; Fire-fighting Ship I- water spraying Special services- Anchor Handling Vessel Unrestricted Navigation
Flag	Singapore
Official No	397257
IMO Number	9633886
Call Sign	9V9550
GRT / NRT	1496/ 449

PERFORMANCE

Maximum Speed	13.0 knots at 28 MT/24 hrs
Economical Speed	12.0 knots at 22 MT/24 hrs
Type of Fuel	Marine Gas Oil
Endurance	About 30 days

PROPULSION SYSTEM

Main Engines	2 x General Electric 16V228, 4100 BHP/ 3057 KW At 1050 rpm. Total: 8200 BHP/ 6114 KW
Auxiliary Engines	3 x 410 KW - 415/ 220 V, 3PH, 50HZ
Emergency Generator	1 x 254 KW - 415V, 3PH, 50 HZ
Bow Thruster	1 x Kamome CPP Electric Driven 500 KW / 66.7 kN thrust
Stern Thruster	1 x Kamome CPP Electric Driven 275 KW / 49 kN thrust
Propellers	2 x Kamome CPP in Fixed Nozzles
Steering Gear System	2 x Electro Hydraulic
Rudder	2

DECK EQUIPMENT

Anchor Windlass c/w bow	1 x MacGregor electro hydraulic with double gypsies, Single towing drum, double warping ends of 400 mm dia.
Anchors & Chain	2 x Stockless Anchor 1920 kg each 2 x 220m x 34mm Ø U2 Stud Link Chains
Anchor Handling / Towing Winch	1 x electro hydraulic double drum waterfall type <i>Line Pull at 1st Layer:</i> 250T @6m/min <i>Brake Holding:</i> 400 mton at 1st layer <i>Drum Capacity:</i> 1000m (L) x 60 mm (Dia) SWR 112.5 tons
Bollard Pull	112.5 tons
Tugger Winch	2 x electro hydraulic 10T@ 5 m/min
Capstan	2 x electro hydraulic 5T@ 5 m/min
Towing Pin	1 x SWL 300 tons
Shark Jaw	1 x SWL 350 tons
Stern Roller	1 x 1500mm Ø x 6000 mm width – SWL 400 tons
Crane	1 x hydraulic telescopic SWL 5 ton@ 15m radius

ACCOMMODATION (All cabins are fully air-conditioned)

Berths	6 x 1 berth cabins=	6
	10x 2 berth cabins=	20
	TOTAL	26

RADIO & NAVIGATION EQUIPMENT

GMDSS (For Area 3)	1 x Sailor 5000
SSB	1 x Sailor 250W
VHF	2 x Sailor RT5022
Radar	2 x Furuno FRA 2117
Echo Sounder	1 x Furuno FE700
Gyro Compass	1 x Simrad GC80
Magnetic Compass	1 x Cassens& Plath
Speed Log	1 x Furuno DS 80
Auto Pilot	1 x Simrad AP50
Navtex Receiver	1 x Furuno NX 700B
GPS Navigator	2 x Furuno DGP-150D/ GP 32
AIS	1 x Furuno FA-150
SART	2 x Sailor SART II
EPIRB	1 x Sailor SE406 II
Portable VHF (GMDSS)	3 x Sailor SP3520

FIRE-FIGHTING EQUIPMENT & ANTI-POLLUTION EQUIPMENT

EXTERNAL

Fi-Fi 1 Notation	Fully compliant with BV requirements
------------------	--------------------------------------

INTERNAL

CO ² System	Engine Room
Fire Fighting Equipment	Fully compliant with SOLAS requirements
Emergency Fire Pump	1 x 70 m ³ /hr @ 80m head
Water Mist System	Engine Room

LIFE SAVING EQUIPMENT

Life Rafts	4 x 15 men, SOLAS compliant
Rescue Boat c/w Davit	1 x 6 men, 20HP c/w outboard engine, SOLAS compliant

All other life saving appliances as per SOLAS requirements

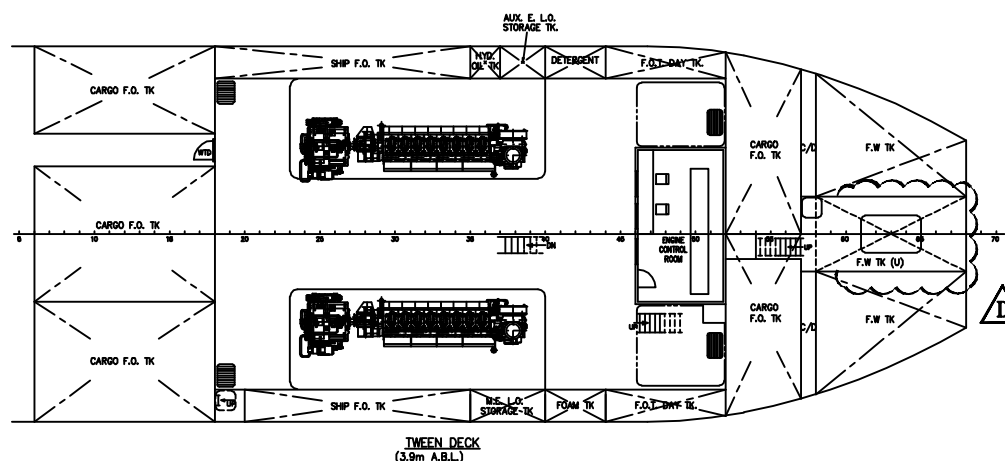
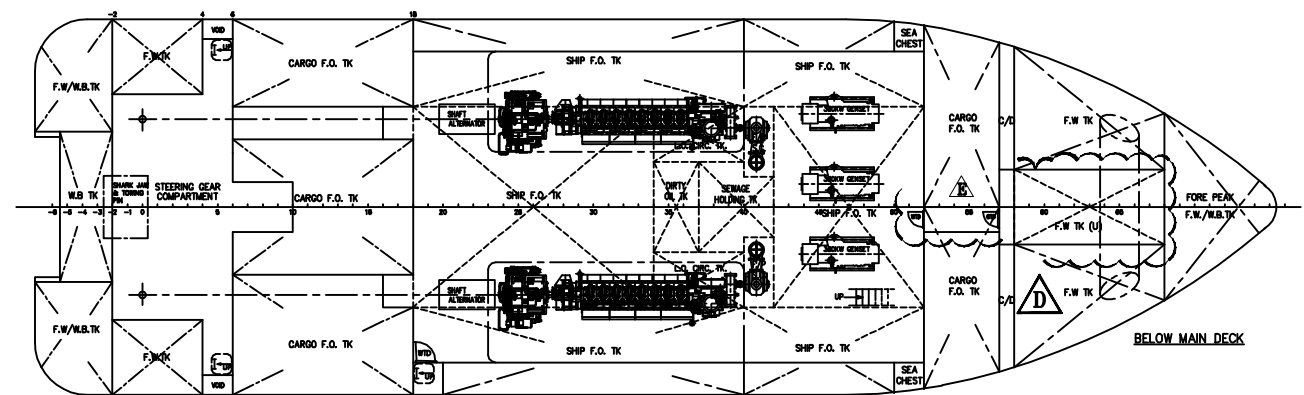
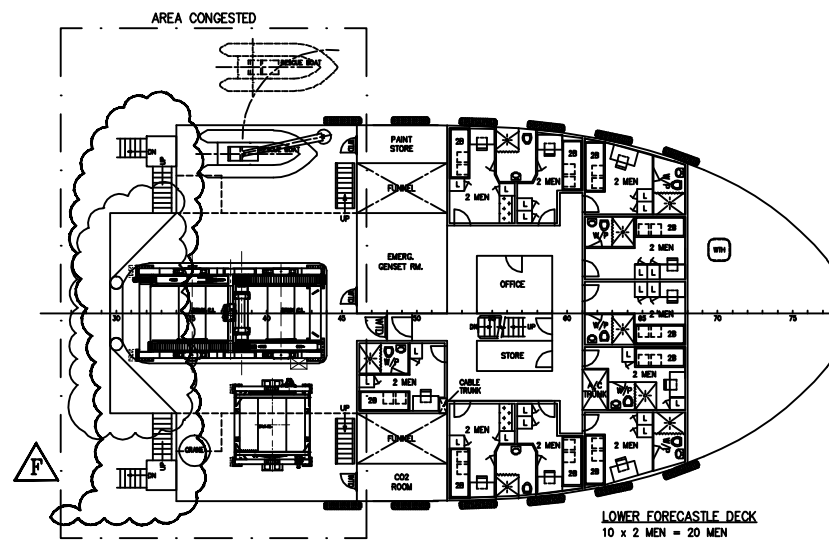
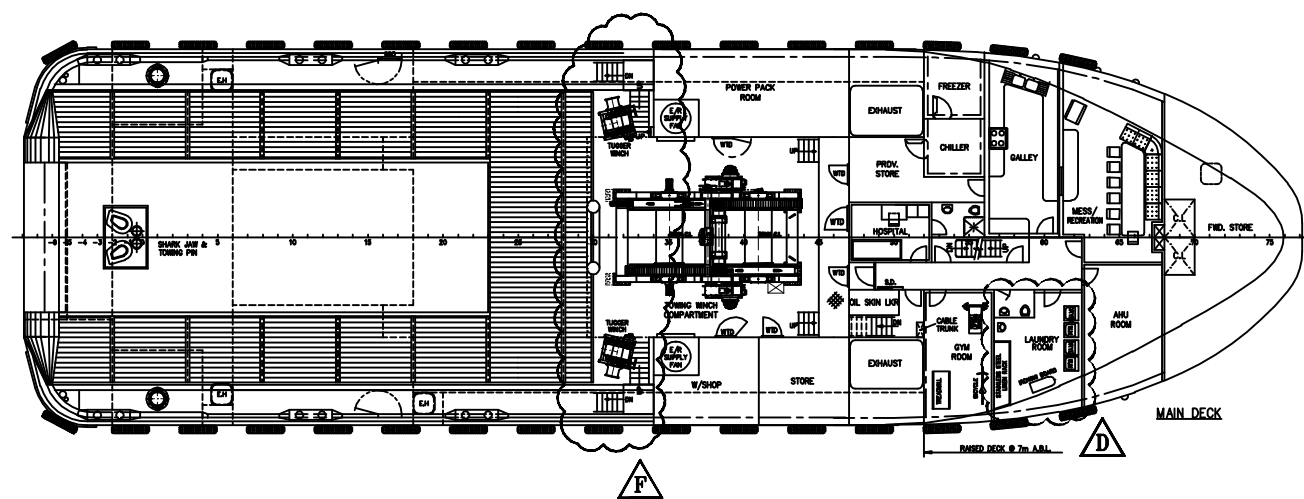
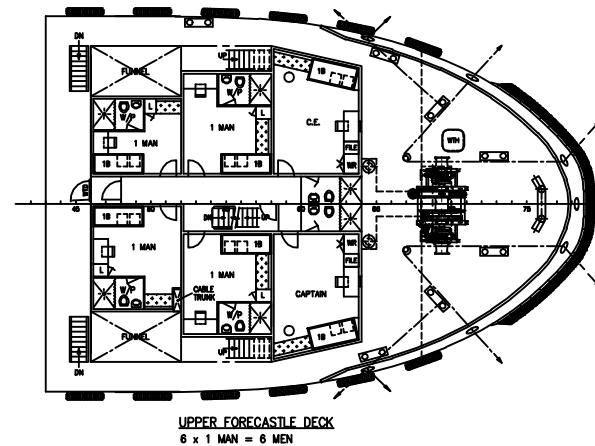
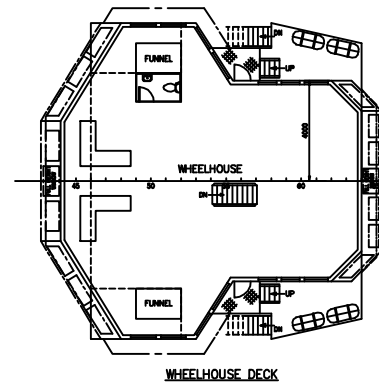
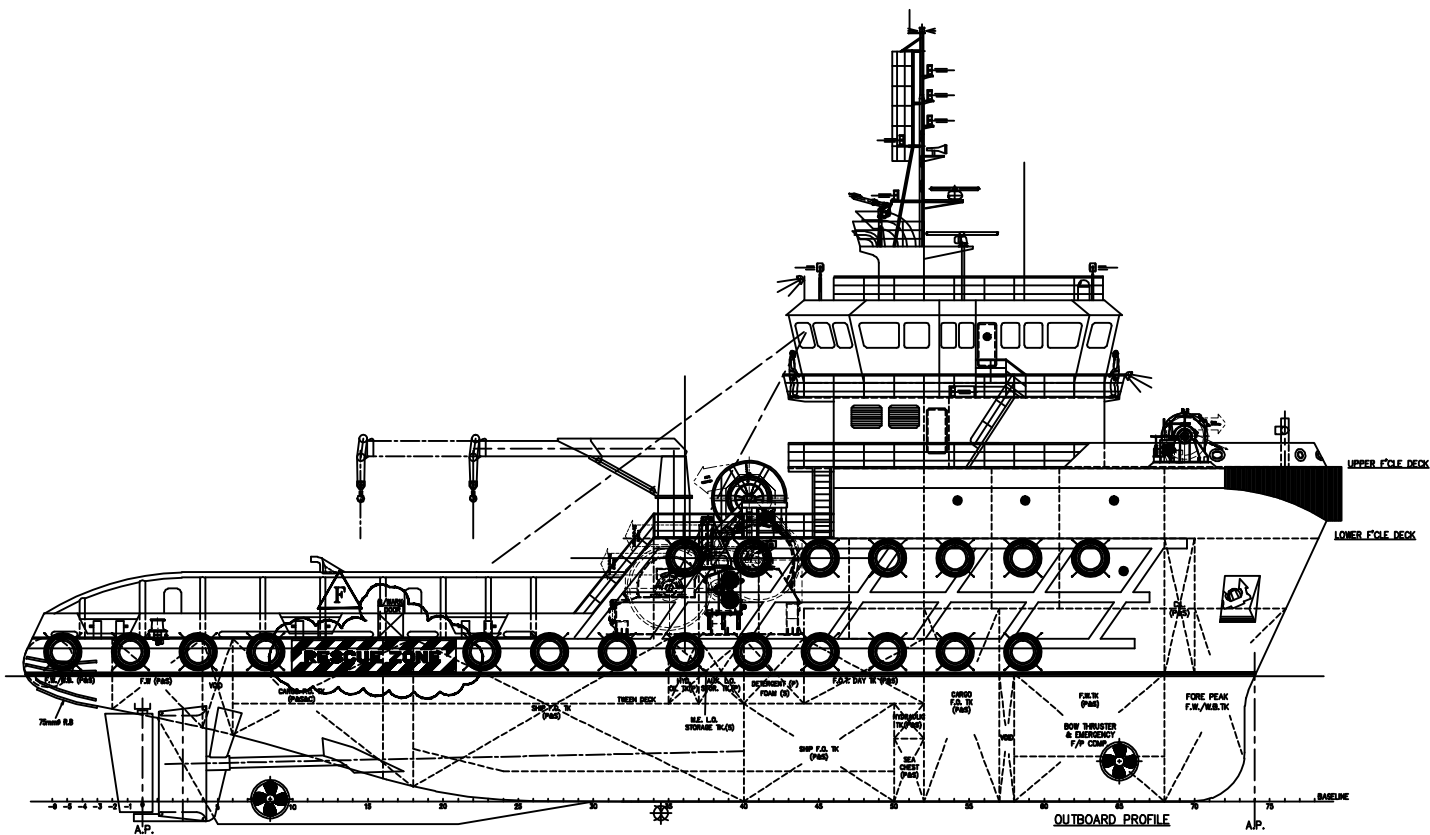
CARGO CAPACITIES

Clear Deck Area	240 m ³
Deck Strength	5 ton/ m ²
Cargo Fuel Oil	585 m ³
Ship Fuel Oil	376 m ³
DW/SWB	122 m ³
Fresh Water	261 m ³
Foam	8 m ³
Dispersant	8 m ³

DISPERSANT SYSTEM

Fresh Water Maker	Nil
Oily Water Separator	1 x 0.5 m ³ /hr
Sewage Treatment Plant	5m ³ /hr

*Particulars above are believed to be correct but not guaranteed. Figures given are approximate only. Owners reserve the rights to amend the specifications without notifications.
 Particulars given are entirely without warranty as to correctness and interested parties must inspect Vessel's certificates, drawings or physical inspection of Vessel.*



PRINCIPAL PARTICULARS

LENGTH O.A	52.00m
LENGTH B.P	44.40m
LENGTH W.L	48.80m
BEAM MLD.	15.00m
DEPTH MLD.	6.50m
DRAFT MLD.	5.00m
DRAFT MAX.	5.70m
COMPLEMENT	26 MEN

DATE	MODIFICATION	REV	BY
22.11.10	ADD B/WARK DOOR & RESCUE ZONE & LADDER FROM MN DK TO LOWER FOCSLE DK	F	OS
17.8.10	MOD PASSAGEWAY FROM FR. 52-57	E	OS
23/7/10	DECK, MOD LAUNDRY ABOVE (YARD REQUEST) & TWIN DK LONG BHD. FROM FR 57 - 68 TO SUIT CONST DWG	D	OS
28.05.10	MOD WHEELHOUSE TO OWNERS' REQUEST	C	OS
28.04.10	WHEELHOUSE RAISED 800mm & CABLE TRUNK ADDED	B	LUA
04.03.08	MOD. TO OWNERS' COMMENTS	A	OS

SHIP: 52m (8200PS) ANCHOR HANDLING TUG

TITLE: General Arrangement

OWNER		YARD NO.	
BUILDER	MICLYN SHIPBUILDING & ENGINEERING PTE LTD		
CLASS	ABS		

WARTSILA SHIP DESIGN SINGAPORE PTE. LTD.
14 BENJ CRESCENT, SINGAPORE 020977
TEL: (65)6542-1138 FAX: (65)6542-1238, E-MAIL: ShipDesign.Singapore@wartsila.com

DRAWN	CHEK	APPROVED	SCALE	DRAWING NO.	REV
CYRILIA			1:150	C4457/G-1	F
11-1-07	06-04-10				

THIS DRAWING AND THE INFORMATION CONTAINED HEREIN ARE SUPPLIED ON THE UNDERSTANDING THAT THEY ARE THE EXCLUSIVE PROPERTY OF WARTSILA SHIP DESIGN SINGAPORE PTE. LTD. THEY MUST NOT BE USED OR REPRODUCED IN WHOLE OR IN PART WITHOUT PERMISSION IN WRITING