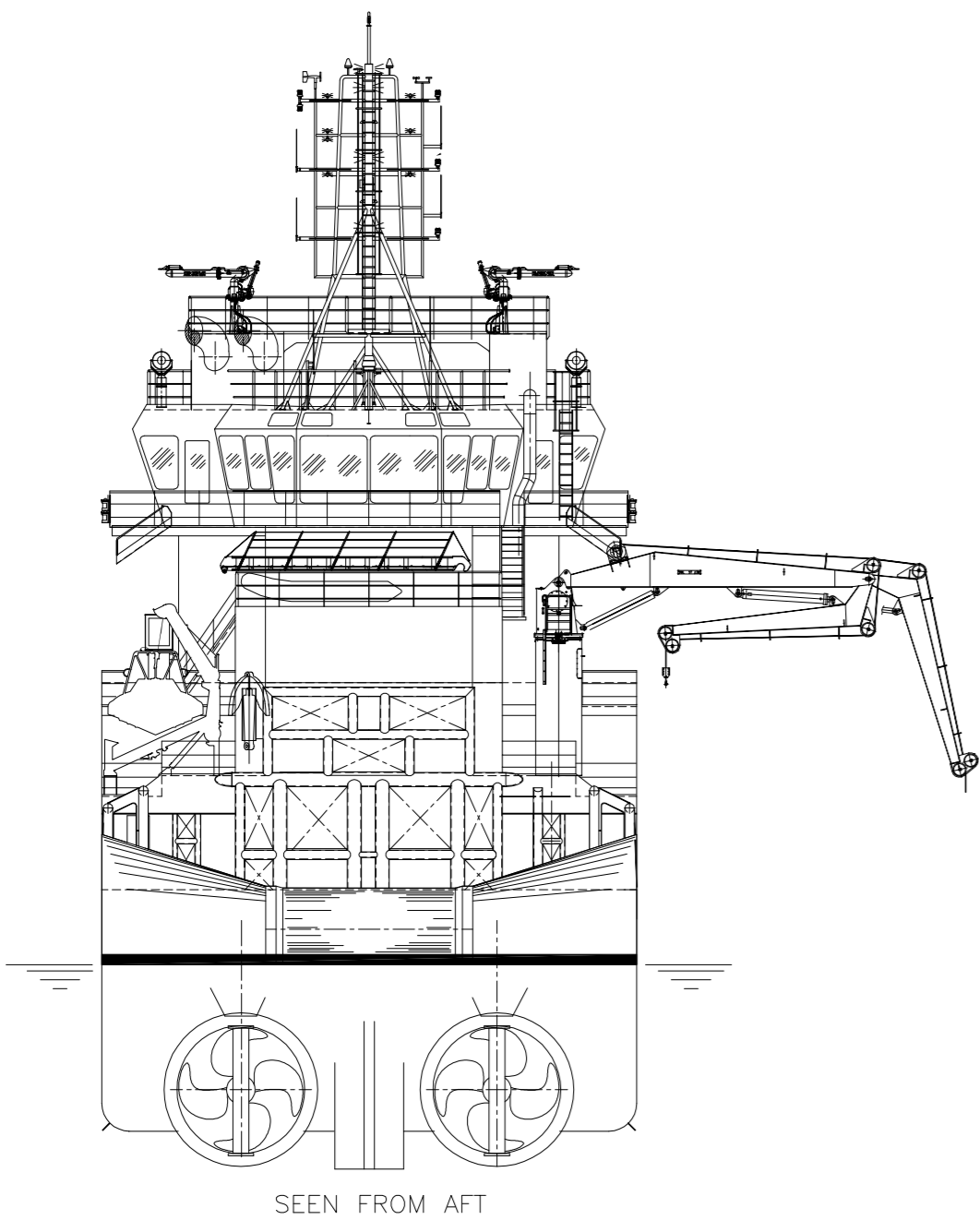
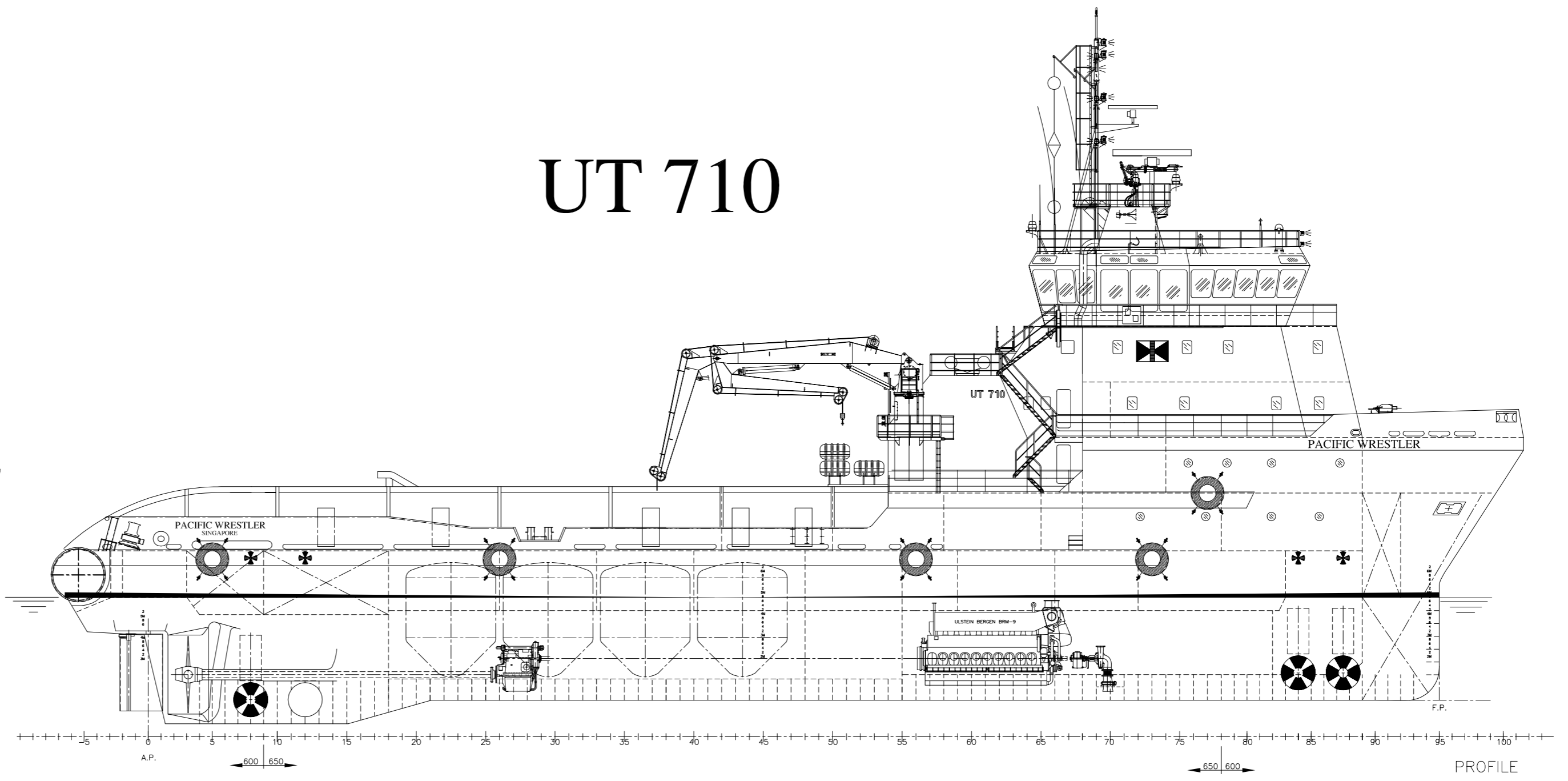


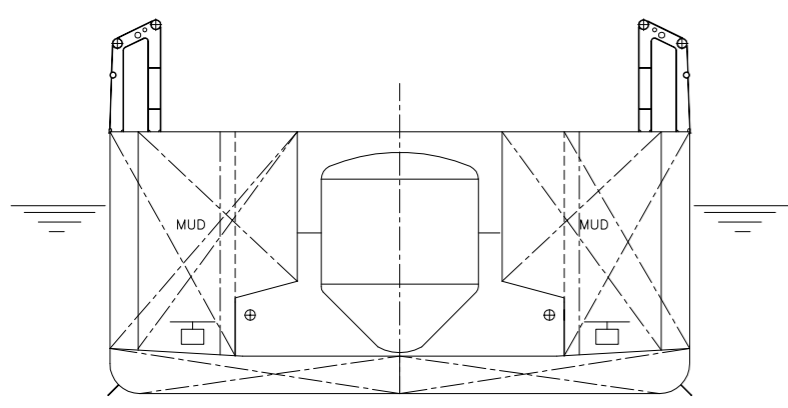
UT 710



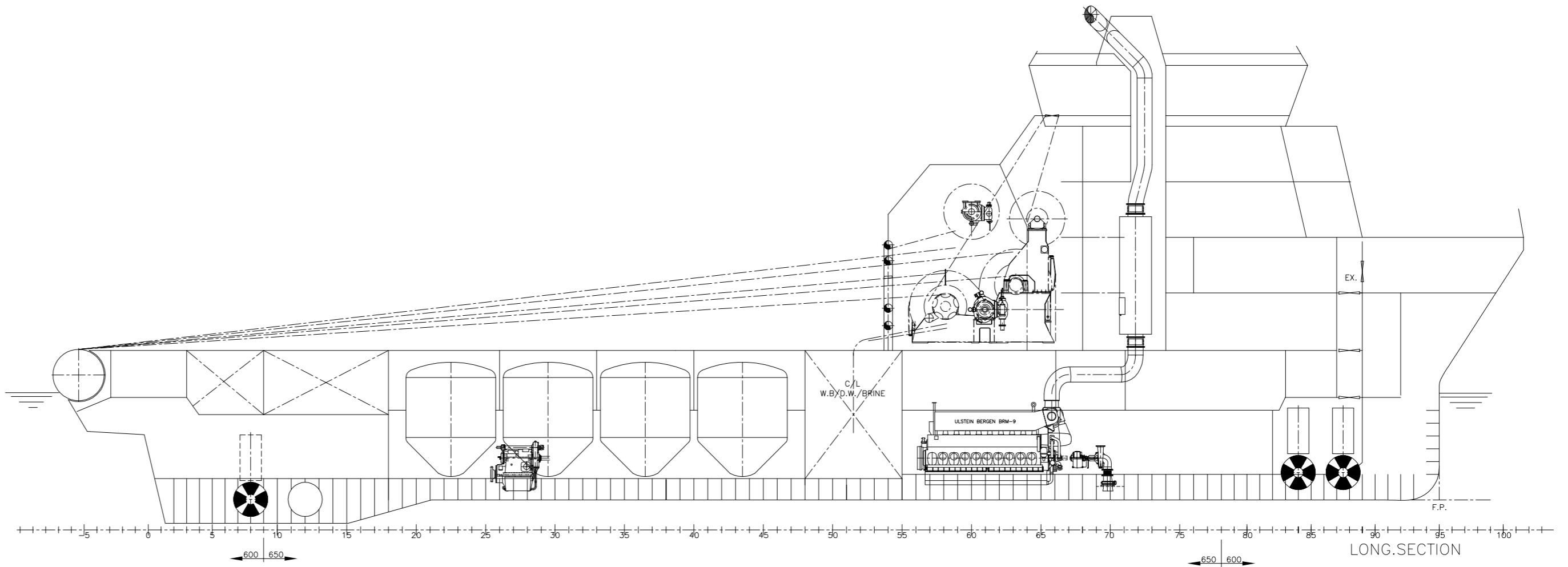
SEEN FROM AFT



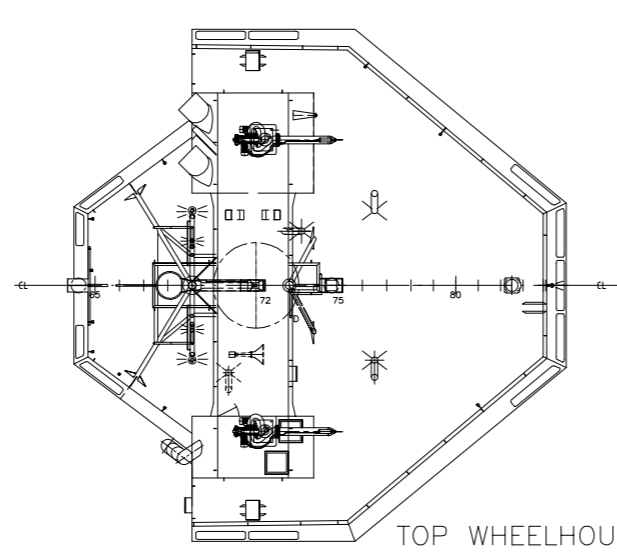
PROFILE



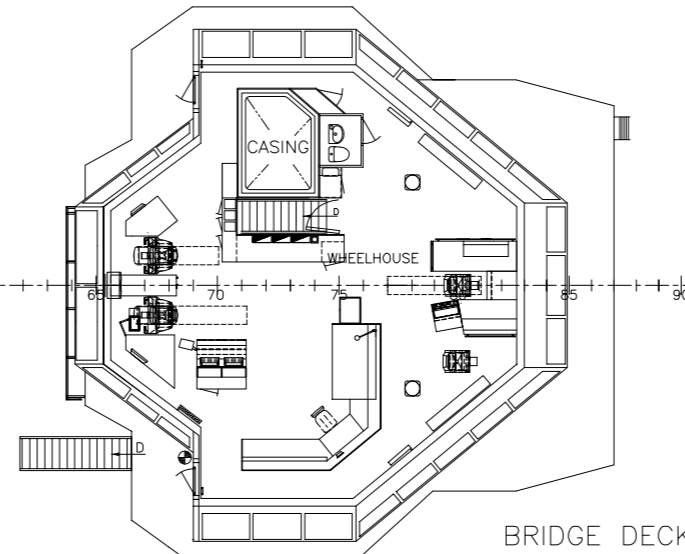
TRANSV. SECTION MIDSHIP



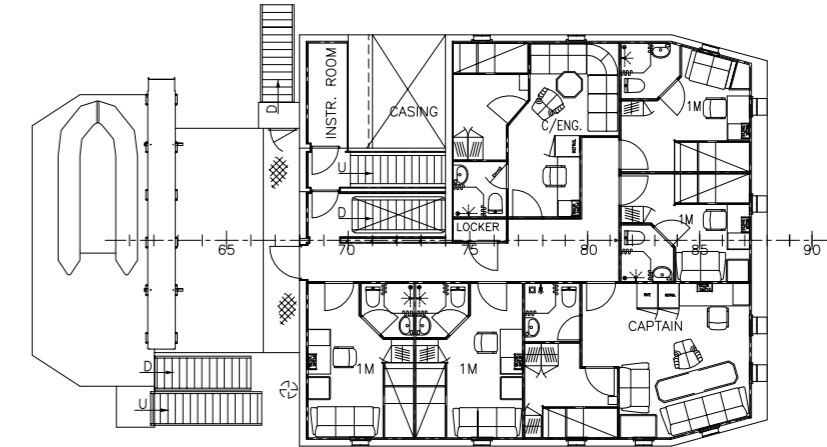
LONG SECTION



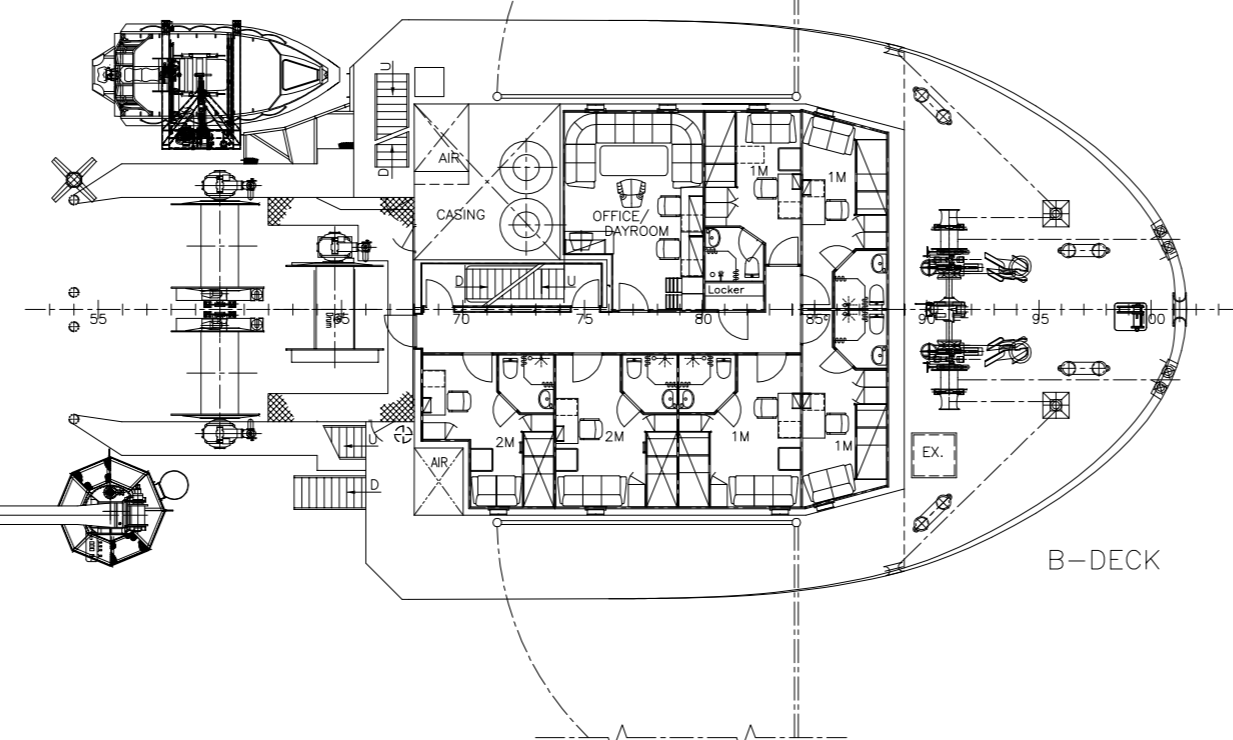
TOP WHEELHOUSE



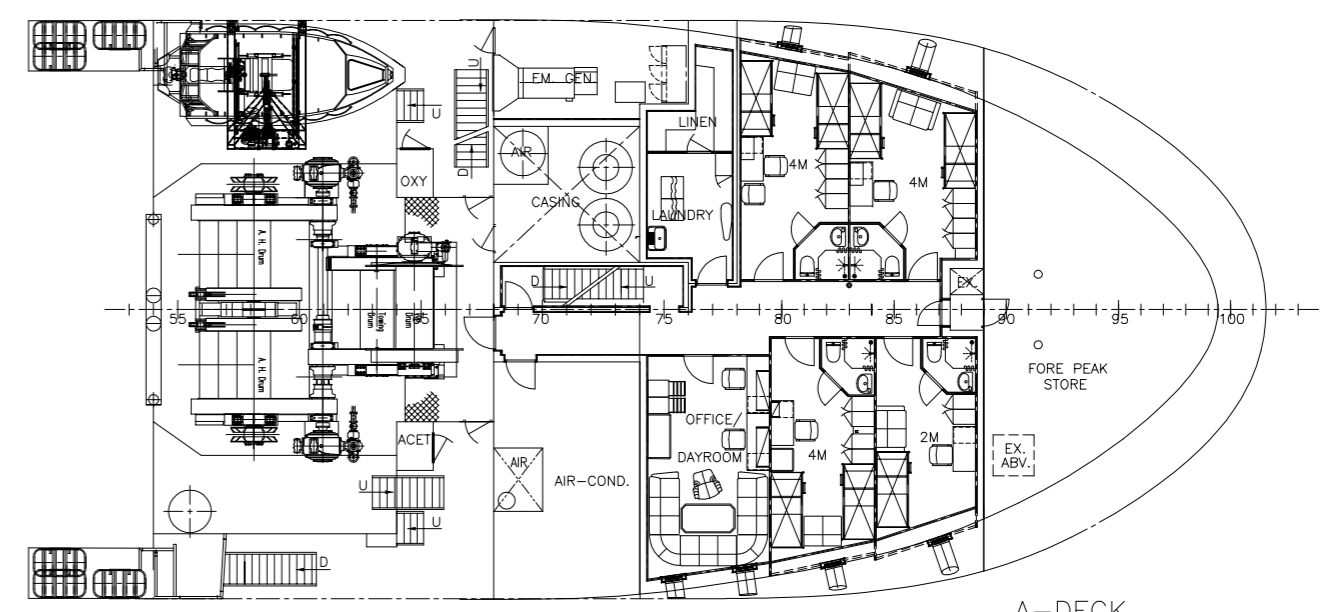
BRIDGE DECK



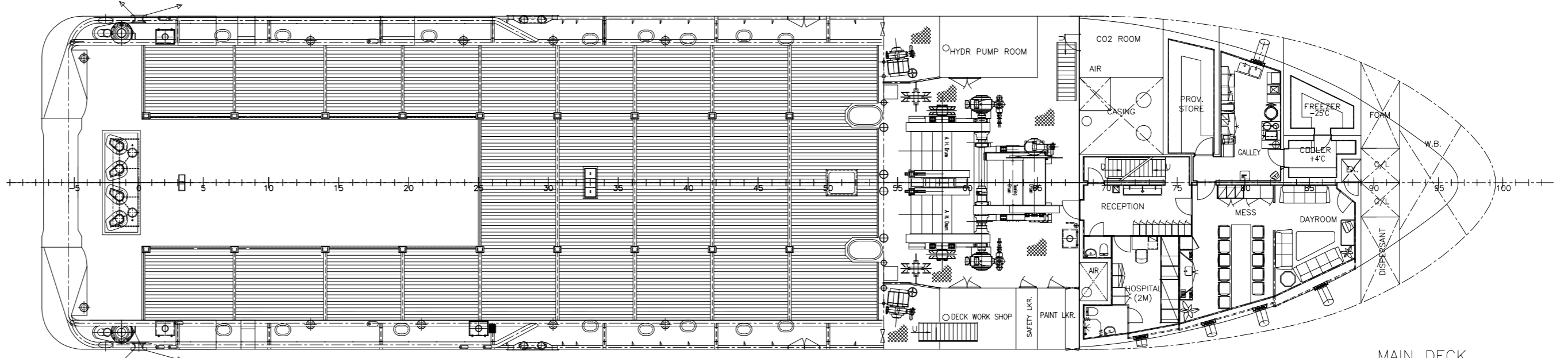
C-DECK



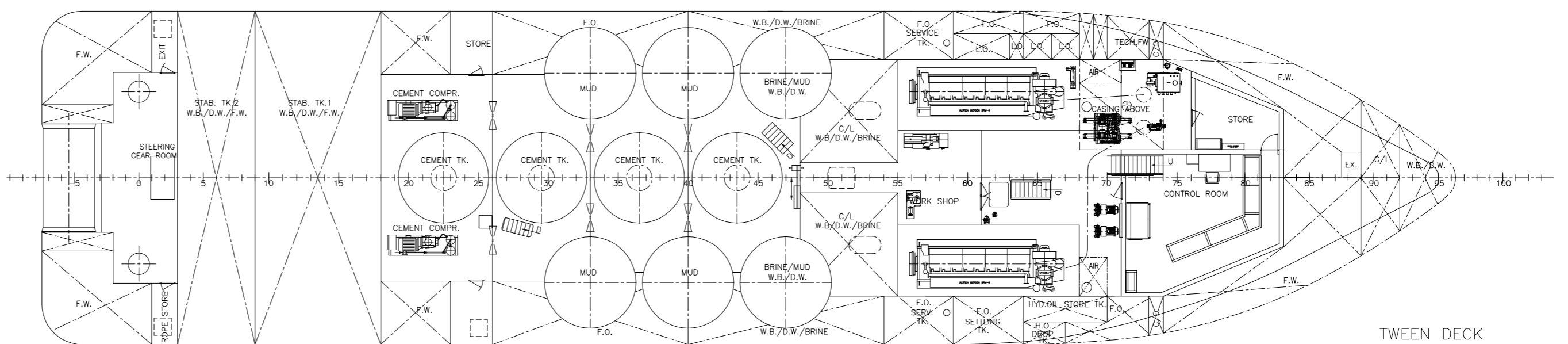
B-DECK



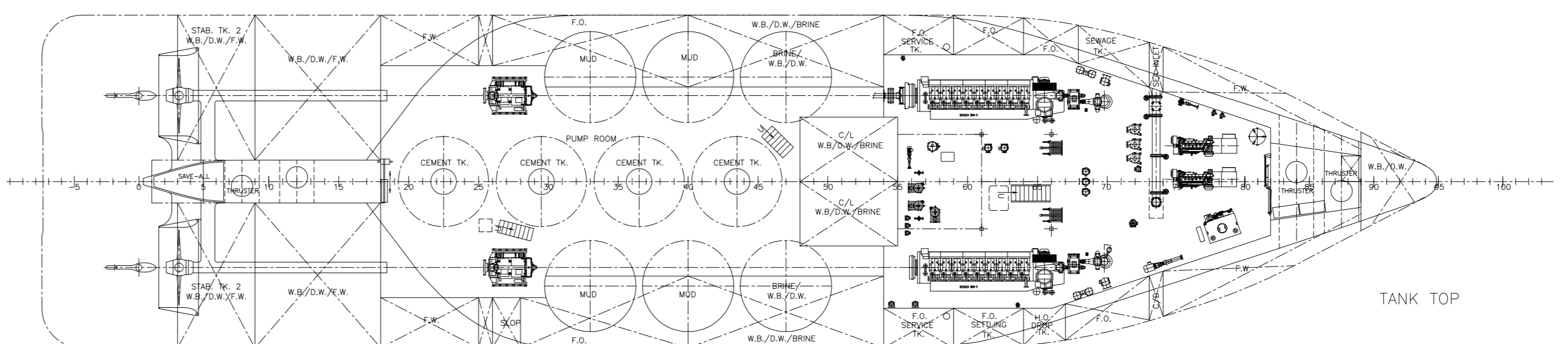
A-DECK



MAIN DECK



TWEEN DECK



TANK TOP

MAIN PARTICULARS

L.O.A. approx. 68.95 m
 L.P.D. 60.45 m
 BREADTH MLD 15.50 m
 DEPTH MAIN DK 7.00 m
 MAX DRAFT AT L/2 approx. 5.90 m

This drawing/specification is the property of Rolls-Royce Marine AS and shall not be copied or the contents thereof or any information received in conjunction therewith must not be imparted to any unauthorised third party. It is to be used for the construction of the vessel only and the recipient of this drawing/specification implies that the conditions mentioned herein are accepted.

Rolls-Royce Marine AS
 dep. Ship Technology - Ulstein
 N-6067 ULSTEINVIK
 NORWAY

NO.	DATE	DESCRIPTION	BY	CHECKED	APPROVED
C	22.08.02	WINDOWS, WHEELHOUSE, DOOR CONTROL ROOM + MISCH	GP	KHU	KHU
B	29.05.02	MISC. MODS	GP	KHU	KHU
A	26.10.01	REVISED	GP	KHU	KHU
0	22.05.01	FOR PRODUCTION	GP	KHU	KHU

REV. DATE:	ALTERATION:	DRAWN/CHECK:	APPR:
25	71050	104	C

E	DIFF. MODIFICATION	DATE	APPR.
		26.04.01	JRH

Rolls-Royce
 dep. Ship Technology - Ulstein
 N-6067 Ulsteinvik, NORWAY
 Tel: +47 70 00 40 00
 Homepage: www.rolls-royce.com
 Enterprise NO 980 371 379

UT-design

PROJECT NO. 00/7225
 SCALE 1:200
 DRAWN 06.09.00 SBJ/gsd
 CHECKED
 APPROVED

DRAWING NO. P-1-6748E